

LACE:HERE:NOW events and exhibitions. See inside this leaflet for full details of all

NOTTINGHAM TRENT UNIVERSITY BONINGTON GALLERY

**SATURDAY 17 NOVEMBER**

**DELIVERED BY SHEILA MASON**

**AND THE NOTTINGHAM LACE TRADE**

**1700S TO 2012: CLUNY LACE**

**WWW.MUSEUM.CASTLE.NOTTINGHAM.AC.UK**

**ADAMS BUILDING**

**NEW COLLEGE NOTTINGHAM,**

**SATURDAY 17 NOVEMBER**

**BOBBIN LACE MAKING WORKSHOP**

**WWW.LACEHERE.NOW.CO.UK/BIGWEEKEND**

**NOTTINGHAM TRENT UNIVERSITY**

**BONINGTON BUILDING**

**SATURDAY 17 NOVEMBER**

**EDWARD JARVIS**

**STORY OF ENGLISH LACE (90 MIN)**

**FILM: THE LACE MAKERS: THE FORGOTTEN**

**WWW.LACEHERE.NOW.CO.UK/BIGWEEKEND**

**NOTTINGHAM TRENT UNIVERSITY**

**BONINGTON BUILDING**

**SATURDAY 17 NOVEMBER**

**UNIVERSITY LACE ARCHIVE**

**VISIT THE NOTTINGHAM TRENT**

**WWW.MUSEUM.CASTLE.NOTTINGHAM.AC.UK/**

**ARTS AND ART GALLERY**

**FRIDAY 16 NOVEMBER**

**AN EVENING OF NOTTINGHAM LACE**

**LAUNCH EVENT: WARPED**

**WWW.MUSEUM.CASTLE.NOTTINGHAM.AC.UK/**

**ARTS AND ART GALLERY**

**SATURDAY 1 DECEMBER**

**LACE ANGELS WORKSHOP**

**WWW.MUSEUM.CASTLE.NOTTINGHAM.AC.UK/**

**NEWSTEAD ABBEY**

**SUNDAY 18 NOVEMBER**

**LACE BEHIND THE SCENES**

**WWW.MUSEUM.CASTLE.NOTTINGHAM.AC.UK/**

**ARTS AND ART GALLERY**

**SUNDAY 18 NOVEMBER**

**THE TERRIBLE PRICE OF LACE**

**WWW.MUSEUM.CASTLE.NOTTINGHAM.AC.UK/**

**ARTS AND ART GALLERY**

**SUNDAY 18 NOVEMBER**

**THE SAD TALE OF ROBERT BLINCOE:**

**STORIES OF LACE**

**WWW.MUSEUM.CASTLE.NOTTINGHAM.AC.UK/**

**ARTS AND ART GALLERY**

**SUNDAY 18 NOVEMBER**

**THE TERRIBLE PRICE OF LACE**

**WWW.MUSEUM.CASTLE.NOTTINGHAM.AC.UK/**

**ARTS AND ART GALLERY**

**SUNDAY 18 NOVEMBER**

**THE SAD TALE OF ROBERT BLINCOE:**

**STORIES OF LACE**

**WWW.MUSEUM.CASTLE.NOTTINGHAM.AC.UK/**

**ARTS AND ART GALLERY**

**SUNDAY 18 NOVEMBER**

**THE TERRIBLE PRICE OF LACE**

**WWW.MUSEUM.CASTLE.NOTTINGHAM.AC.UK/**

**ARTS AND ART GALLERY**

**SUNDAY 18 NOVEMBER**

**THE TERRIBLE PRICE OF LACE**

**WWW.MUSEUM.CASTLE.NOTTINGHAM.AC.UK/**

**ARTS AND ART GALLERY**

**SUNDAY 18 NOVEMBER**

**THE TERRIBLE PRICE OF LACE**

**WWW.MUSEUM.CASTLE.NOTTINGHAM.AC.UK/**

**ARTS AND ART GALLERY**

**SUNDAY 18 NOVEMBER**

**THE TERRIBLE PRICE OF LACE**

**WWW.MUSEUM.CASTLE.NOTTINGHAM.AC.UK/**

**ARTS AND ART GALLERY**

**SUNDAY 18 NOVEMBER**

**THE TERRIBLE PRICE OF LACE**

**WWW.MUSEUM.CASTLE.NOTTINGHAM.AC.UK/**

**ARTS AND ART GALLERY**

**SUNDAY 18 NOVEMBER**

**THE TERRIBLE PRICE OF LACE**

**WWW.MUSEUM.CASTLE.NOTTINGHAM.AC.UK/**

**ARTS AND ART GALLERY**

**SUNDAY 18 NOVEMBER**

**THE TERRIBLE PRICE OF LACE**

**WWW.MUSEUM.CASTLE.NOTTINGHAM.AC.UK/**

**ARTS AND ART GALLERY**

**SUNDAY 18 NOVEMBER**

**THE TERRIBLE PRICE OF LACE**

**WWW.MUSEUM.CASTLE.NOTTINGHAM.AC.UK/**

**ARTS AND ART GALLERY**

**SUNDAY 18 NOVEMBER**

**THE TERRIBLE PRICE OF LACE**

**WWW.MUSEUM.CASTLE.NOTTINGHAM.AC.UK/**

**ARTS AND ART GALLERY**

**SUNDAY 18 NOVEMBER**

**THE TERRIBLE PRICE OF LACE**

**WWW.MUSEUM.CASTLE.NOTTINGHAM.AC.UK/**

**ARTS AND ART GALLERY**

**SUNDAY 18 NOVEMBER**

**THE TERRIBLE PRICE OF LACE**

**WWW.MUSEUM.CASTLE.NOTTINGHAM.AC.UK/**

**ARTS AND ART GALLERY**

**SUNDAY 18 NOVEMBER**

**THE TERRIBLE PRICE OF LACE**

**WWW.MUSEUM.CASTLE.NOTTINGHAM.AC.UK/**

**ARTS AND ART GALLERY**

**SUNDAY 18 NOVEMBER**

**THE TERRIBLE PRICE OF LACE**

**WWW.MUSEUM.CASTLE.NOTTINGHAM.AC.UK/**

**ARTS AND ART GALLERY**

**SUNDAY 18 NOVEMBER**

**THE TERRIBLE PRICE OF LACE**

**WWW.MUSEUM.CASTLE.NOTTINGHAM.AC.UK/**

**ARTS AND ART GALLERY**

**SUNDAY 18 NOVEMBER**

**THE TERRIBLE PRICE OF LACE**

**WWW.MUSEUM.CASTLE.NOTTINGHAM.AC.UK/**

**ARTS AND ART GALLERY**

**SUNDAY 18 NOVEMBER**

**THE TERRIBLE PRICE OF LACE**

**WWW.MUSEUM.CASTLE.NOTTINGHAM.AC.UK/**

**ARTS AND ART GALLERY**

**SUNDAY 18 NOVEMBER**

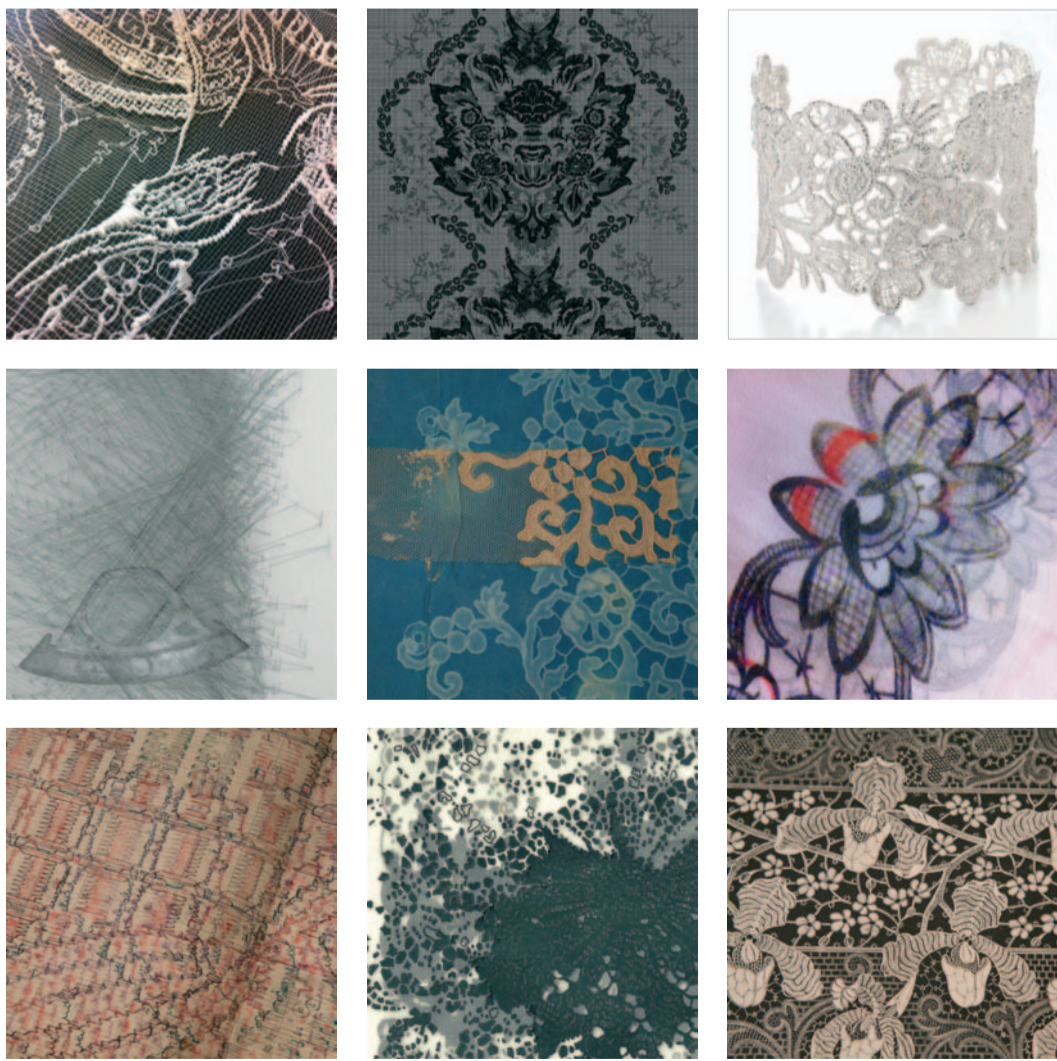
**THE TERRIBLE PRICE OF LACE**

# LACE:HERE:NOW



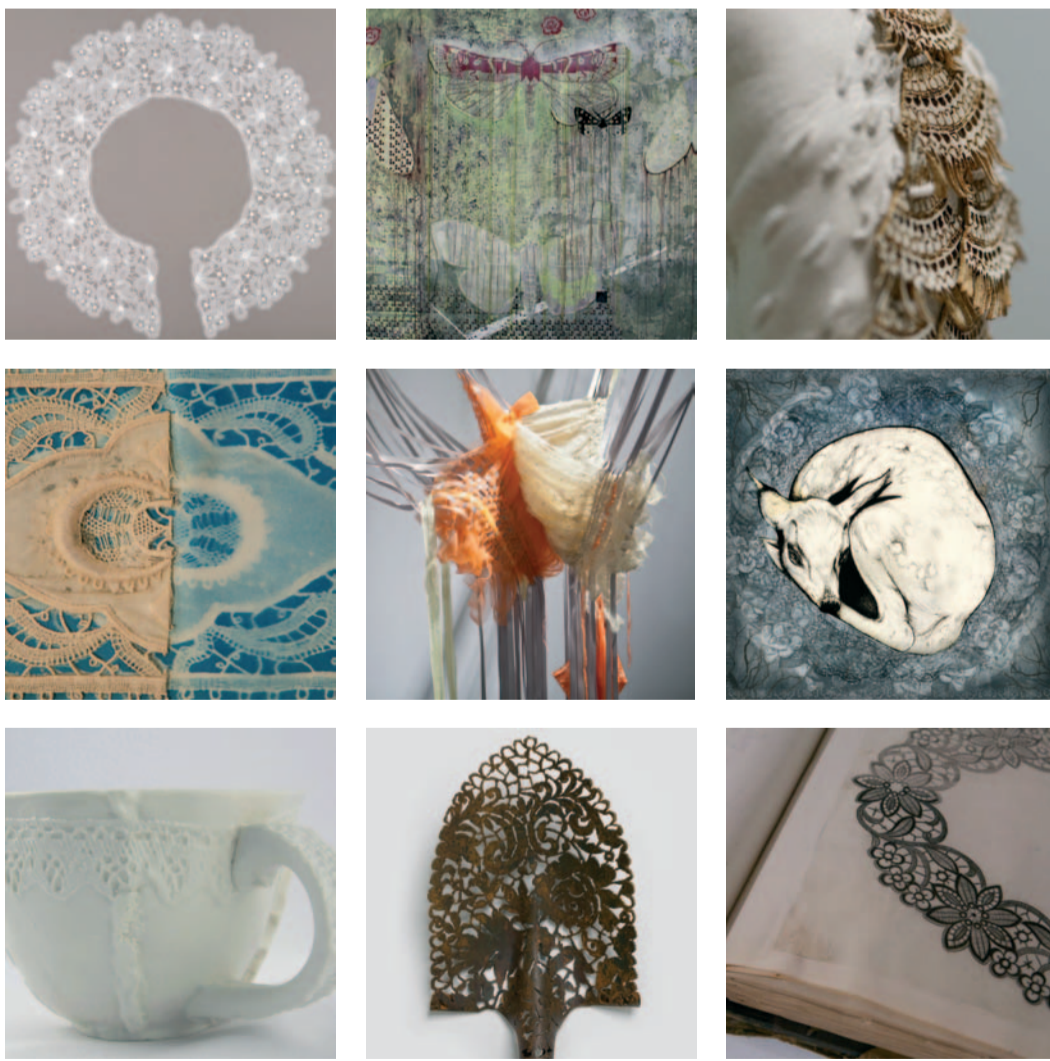
Exhibitions will be held at Nottingham Castle Museum & Art Gallery, Bonington Gallery at Nottingham Trent University and Art & Design and Nottingham Castle Museum & Art Gallery, the season will take place at key venues across the city and county. Trent University's School of Art & Design and Nottingham Castle Museum & Art Gallery, the season will take place at key venues across the city and county. Evolved from a series of discussions between Nottingham Trent University's School of Art & Design and Nottingham Castle Museum & Art Gallery, the season will take place at key venues across the city and county. Evolved from a series of discussions between Nottingham Trent University's School of Art & Design and Nottingham Castle Museum & Art Gallery, the season will take place at key venues across the city and county. Evolved from a series of discussions between Nottingham Trent University's School of Art & Design and Nottingham Castle Museum & Art Gallery, the season will take place at key venues across the city and county.

## LACE:HERE:NOW



## LACE:HERE:NOW

SEPTEMBER 2012 - FEBRUARY 2013



### BIG WEEKEND

17 & 18 NOVEMBER 2012

The Big Weekend provides an opportunity to experience a number of the lace Seasons key events over two days in and around Nottingham.

# HERE:NOW

**LACE WORKS:**  
**CONTEMPORARY ART & NOTTINGHAM LACE**  
**17 & 18 NOVEMBER**  
NOTTINGHAM CASTLE MUSEUM & ART GALLERY

**JOURNEYS IN LACE - PART TWO**  
**SATURDAY 17 NOVEMBER**  
BONINGTON GALLERY, NOTTINGHAM TRENT UNIVERSITY

**VISIT THE NOTTINGHAM TRENT UNIVERSITY LACE ARCHIVE**  
**SATURDAY 17 NOVEMBER**  
BONINGTON BUILDING, NOTTINGHAM TRENT UNIVERSITY

**FILM: THE LACE MAKERS: THE FORGOTTEN STORY OF ENGLISH LACE - EDWARD JARVIS**  
**SATURDAY 17 NOVEMBER**  
BONINGTON BUILDING, NOTTINGHAM TRENT UNIVERSITY

**1700S TO 2012:**  
**CLUNY LACE AND THE NOTTINGHAM LACE TRADE**  
**DELIVERED BY SHEILA MASON**  
**SATURDAY 17 NOVEMBER**  
BONINGTON BUILDING, NOTTINGHAM TRENT UNIVERSITY

**BOBBIN LACEMAKING TASTER WORKSHOP**  
**SATURDAY 17 NOVEMBER**  
ADAMS BUILDING, NEW COLLEGE NOTTINGHAM

**STORIES OF LACE - THE SAD TALE OF ROBERT BLINCOE: THE TERRIBLE PRICE OF LACE**  
**SUNDAY 18 NOVEMBER**  
NOTTINGHAM CASTLE MUSEUM & ART GALLERY

**LACE BEHIND THE SCENES**  
**SUNDAY 18 NOVEMBER**  
NEWSTEAD ABBEY

See inside this leaflet for full details of all **LACE:HERE:NOW** Big Weekend events and exhibitions.

All information correct as at time of printing.

FRONT COVER IMAGES (L-R, TOP-BOTTOM)  
Teresa Whitfield - Circular Tape Lace Collar (2008)  
Madeleine Burt - Brought to Light (2011)  
Joy Buttress - Lacuna (glove 1) (2012)  
Nottingham Trent University lace archive  
Lucy Brown - Untitled (2012)  
Louise Coleman - Untitled (2012)  
Clare Gage - porcelain cup  
Cal Lane - Untitled (detail) (2006) photo Guy L'Heureux  
Nottingham Trent University lace archive

IMAGES ABOVE (L-R, TOP-BOTTOM)  
Tessa Acti - Lace Bird (2012)  
Timorous Beasities - Devils Damask Lace  
Brigitte Adolf and J.C. Middlebrook - silver cuff (2012)  
Nicola Donovan - heritage web (2010)  
Nottingham Trent University lace archive  
Amanda Briggs-Goode - circles of lace (2012)  
Nottingham Trent University lace archive  
Claire Bradshaw - Lace Project (study) (2012)  
Nottingham Trent University lace archive



# LACE:HERE:NOW

SEPTEMBER 2012 - FEBRUARY 2013

## 01 STORIES FOR THE ARCHIVE - REMEMBERING LACE DESIGN DAYS

FRIDAY 7 SEPTEMBER, 11AM - 12.30PM & 2PM - 3.30PM  
NOTTINGHAM TRENT UNIVERSITY

Reveal your lace stories and explore the Lace Archive at Nottingham Trent University.

**Bookings:** contact [helena.tomlin@ntu.ac.uk](mailto:helena.tomlin@ntu.ac.uk)  
[www.ntu.ac.uk/lacearchive](http://www.ntu.ac.uk/lacearchive)

## 02 DEBBIE BRYAN NOTTINGHAMSHIRE CRAFT TRAIL SEPTEMBER 2012 - FEBRUARY 2013

An exciting collection of contemporary craft, traditional design, interactive heritage open days, 'pop-up' tea parties and much more...

For full details please visit the website [www.debbiebryan.co.uk](http://www.debbiebryan.co.uk)

## 03 JOURNEYS IN LACE - PART ONE 22 SEPTEMBER - 4 NOVEMBER

WALLNER GALLERY, LAKESIDE ARTS CENTRE

Textiles, Fashion and Decorative Arts staff from the School of Art & Design at Nottingham Trent University have used their extensive lace archive as a starting point to explore historical lace and influence contemporary work.

**Opening times:** Monday - Saturday 10am - 5pm, Sunday 12pm - 4pm. Admission free.

**Private view:** Meet the Artists, Thursday 27 September, 6pm - 7.30pm  
To attend please call +44 (0)115 8467777 [www.lakesidearts.org.uk](http://www.lakesidearts.org.uk)

## 04 BROADWAY CINEMA

THURSDAY 27 SEPTEMBER, 10.30AM & 1.30PM  
SATURDAY 29 SEPTEMBER, 1PM

Feature-length programme of archive films on the theme of Nottingham lace compiled by the Midland Archive of Central England (MACE).

[www.broadway.org.uk](http://www.broadway.org.uk)

## 05 NOTTINGHAM INDUSTRIAL MUSEUM WOLLATON HALL

SEPTEMBER - OCTOBER, 11AM - 5PM;  
NOVEMBER - FEBRUARY, 11AM - 4PM  
\*EXCLUDING CHRISTMAS/NEW YEAR

Learn more about the rich industrial heritage that has made Nottingham into the city it is today, and what it was like to work here. Featuring some of the earliest and most important lace machinery of its type in the country.

[www.nottinghamindustrialmuseum.co.uk](http://www.nottinghamindustrialmuseum.co.uk)

## 11 LACE SEASON EXHIBITION

ARTISTS: VICTORIA BROWN & LOUISE WEST  
8 - 25 OCTOBER

THE LACE MARKET GALLERY, NEW COLLEGE NOTTINGHAM

Victoria Brown will be exhibiting artworks inspired by her families connection to the Nottingham Lace Industry and Louise West will exhibit contemporary three dimensional lace work. Admission free.

[www.ncn.ac.uk/gallery](http://www.ncn.ac.uk/gallery)

## 06 LACE WORKS: CONTEMPORARY ART AND NOTTINGHAM LACE

10 NOVEMBER 2012 - 3 FEBRUARY 2013

NOTTINGHAM CASTLE MUSEUM & ART GALLERY

ARTISTS: LUCY BROWN, JOY BUTTRESS, NICOLA DONOVAN, CAL LANE, TERESA WHITFIELD, TIMOROUS BEASTIES

Highlights from Nottingham Castle Museum & Art Gallery's historic lace collection provide a rich context for six contemporary artists whose work is inspired by lace. From fine thread to heavy metal, the exhibition includes existing work and exciting new pieces made especially for the exhibition. The Castle's internationally important collection acts as a catalyst for new ideas that challenge traditional definitions of lace.

**Opening times:** Monday - Closed, Tuesday - Sunday 10am - 4pm

Entry included in Castle admission prices (see website for details)  
[www.mynottingham.gov.uk/nottinghamcastle](http://www.mynottingham.gov.uk/nottinghamcastle)

## VENUES

01

**NOTTINGHAM TRENT UNIVERSITY**

Bonington building,  
Dryden Street, City site,  
Nottingham, NG1 4BU  
+44 (0)115 848 8268  
[boningtongallery@ntu.ac.uk](mailto:boningtongallery@ntu.ac.uk)

02

**DEBBIE BRYAN STUDIO & SHOP**

18 St Mary's Gate,  
The Lace Market,  
Nottingham, NG1 1PF  
+44 (0)115 950 7776  
[info@debbiebryan.co.uk](mailto:info@debbiebryan.co.uk)

03

**WALLNER GALLERY**

DH Lawrence Pavilion,  
Lakeside Arts Centre,  
University Park, NG7 2RD  
+44 (0)115 846 7777

04

**BROADWAY CINEMA**

14-18 Broad Street,  
Nottingham, NG1 3AL  
+44 (0)115 952 6611  
[info@broadway.org.uk](mailto:info@broadway.org.uk)

05

**NOTTINGHAM INDUSTRIAL MUSEUM**

Stable Block, Wollaton Hall,  
Wollaton Park,  
Nottingham, NG8 2AE  
+44 (0)115 915 3900  
[wollaton@ncmg.org.uk](mailto:wollaton@ncmg.org.uk)

06

**FRAMEWORK KNITTERS MUSEUM**

Chapel Street, Ruddington,  
Nottingham, NG11 6HE  
+44 (0)115 984 6914

07

**NOTTINGHAM CASTLE MUSEUM & ART GALLERY**

Castle Place,  
Nottingham, NG1 6EL  
+44 (0)115 915 3700  
[nottingham.castle@nottinghamcity.gov.uk](mailto:nottingham.castle@nottinghamcity.gov.uk)

08

**NEWSTEAD ABBEY**

Ravenshead,  
Nottinghamshire,  
NG15 8NA  
01623 455 900  
Newstead.Abbey@nottinghamcity.gov.uk

09

**NOTTINGHAM TRENT UNIVERSITY**

Newton & Arkwright buildings,  
Goldsmith Street, Nottingham,  
NG1 4BU  
[www.nottwords.org.uk](http://www.nottwords.org.uk)

10

**NOTTINGHAM CONTEMPORARY**

Weekday Cross,  
Nottingham, NG1 2GB  
+44 (0)115 948 9750  
[info@nottinghamcontemporary.org](mailto:info@nottinghamcontemporary.org)

11

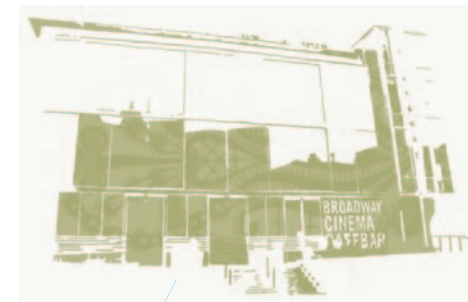
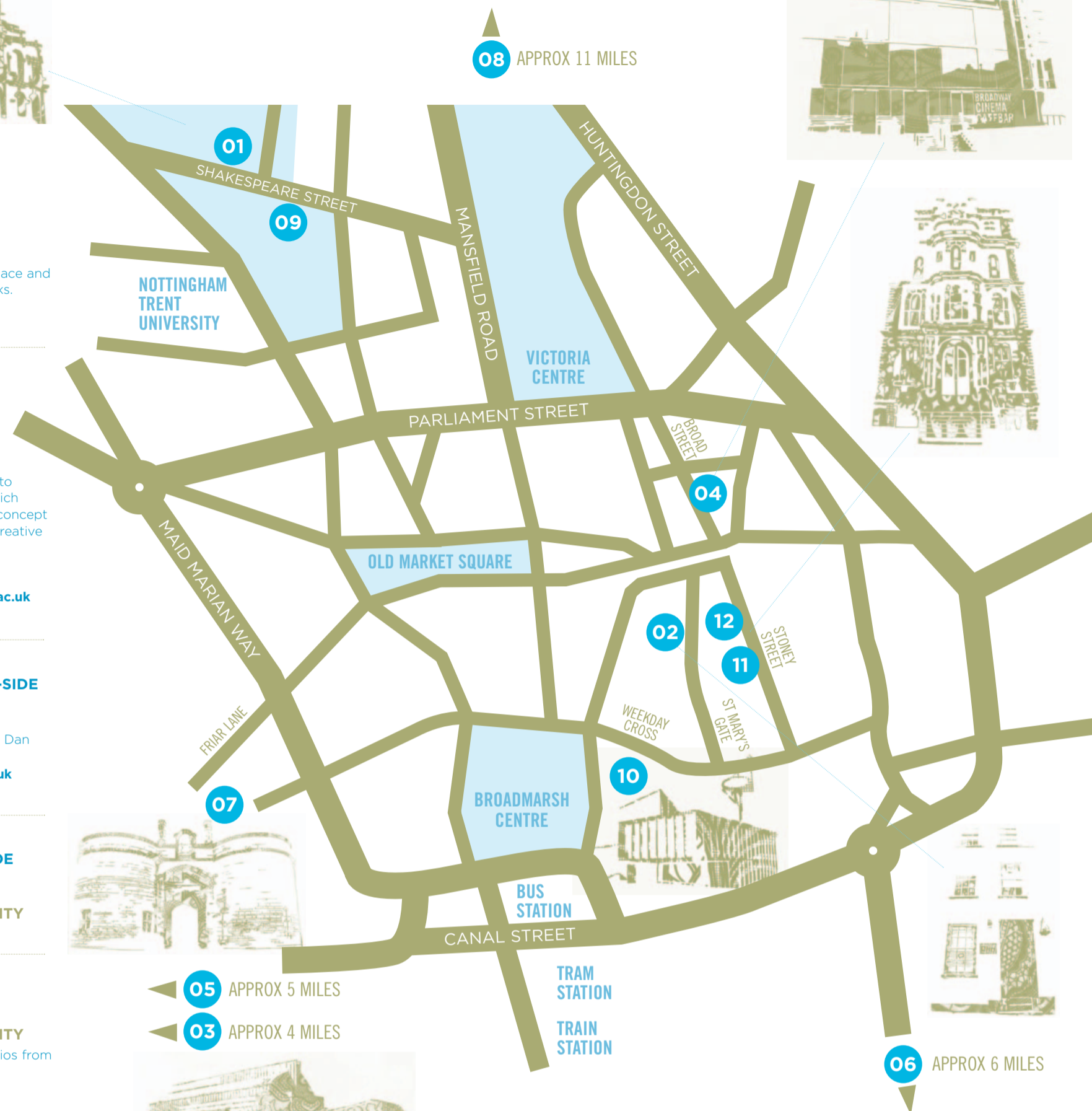
**NEW COLLEGE NOTTINGHAM LACE MARKET GALLERY**

25 Stoney Street,  
Nottingham, NG1 1LP  
+44 (0)115 912 5502 x3801  
[galleries@ncn.ac.uk](mailto:galleries@ncn.ac.uk)

12

**NEW COLLEGE NOTTINGHAM**

Adams building,  
The Lace Market,  
Nottingham, NG1 1NG  
+44 (0) 9 100 100



## 07 FRAMEWORK KNITTERS MUSEUM SPECIAL WEEKEND - THE CRADLE OF THE NOTTINGHAM LACE INDUSTRY 10 - 11 NOVEMBER

Join in recreating the early attempts at developing machine made lace and see demonstrators recreate the process and view lace pattern books. For daily opening times see [www.rfkm.org](http://www.rfkm.org). The museum is open throughout the season - visit website for details.

## 01 JOURNEYS IN LACE - PART TWO 12 NOVEMBER - 14 DECEMBER

MONDAY - FRIDAY, 10AM - 5PM  
BONINGTON GALLERY,  
NOTTINGHAM TRENT UNIVERSITY

Students from the Textiles, Fashion and Decorative Arts courses at Nottingham Trent University have been inspired by its lace archive to produce drawings, textiles, products and investigations. Using the rich heritage of the archive to form the starting point they explore the concept of lace, exploration of materials and the use of heritage to inform creative thought for a new generation of designers.

**Private view:**

Tuesday 13 November 2012, 6pm - 8pm. Admission free  
To attend the private view please RSVP to [boningtongallery@ntu.ac.uk](mailto:boningtongallery@ntu.ac.uk)  
[www.ntu.ac.uk/boningtongallery](http://www.ntu.ac.uk/boningtongallery)

## 07 LAUNCH EVENT: WARPED AN EVENING OF NOTTINGHAM LACE - SHADOW-SIDE

FRIDAY 16 NOVEMBER, 6PM - 8.30PM  
NOTTINGHAM CASTLE MUSEUM & ART GALLERY

Curated by Nicola Donovan, the event features Boggarts Breakfast, Dan Glitterhawk on decks, sideshows and much more. Admission free.  
For private view please RSVP to [exhibitions@nottinghamcity.gov.uk](mailto:exhibitions@nottinghamcity.gov.uk)  
[www.mynottingham.gov.uk/nottinghamcastle](http://www.mynottingham.gov.uk/nottinghamcastle)

## 01 1700S TO 2012: CLUNY LACE AND THE NOTTINGHAM LACE TRADE DELIVERED BY SHEILA MASON

SATURDAY 17 NOVEMBER, 11AM - 12PM  
BONINGTON BUILDING, NOTTINGHAM TRENT UNIVERSITY  
[www.laceherenow.co.uk](http://www.laceherenow.co.uk)

## 01 VISIT THE NOTTINGHAM TRENT UNIVERSITY LACE ARCHIVE

SATURDAY 17 NOVEMBER, 11AM - 3PM  
BONINGTON BUILDING, NOTTINGHAM TRENT UNIVERSITY  
View a selection of hand made and machine made lace and portfolios from the extensive lace archive.  
[www.laceherenow.co.uk](http://www.laceherenow.co.uk)

## 01 FILM: THE LACE MAKERS: THE FORGOTTEN STORY OF ENGLISH LACE (90 MIN) EDWARD JARVIS

SATURDAY 17 NOVEMBER, 1PM  
BONINGTON BUILDING, NOTTINGHAM TRENT UNIVERSITY  
There will be a short pre-screening introduction by the filmmaker.  
[www.laceherenow.co.uk](http://www.laceherenow.co.uk)

## 12 BOBBIN LACEMAKING TASTER WORKSHOP WITH LOUISE WEST (BEGINNERS WELCOME)

SATURDAY 17 NOVEMBER, 10AM - 1PM  
ADAMS BUILDING, NEW COLLEGE NOTTINGHAM  
The session will be held in the glass studios at New College Nottingham's Adams building which was originally used for designers in the Lace Industry.  
**Bookings:** see [www.ncn.ac.uk](http://www.ncn.ac.uk) for details

## 07 STORIES OF LACE - THE SAD TALE OF ROBERT BLINCOE: THE TERRIBLE PRICE OF LACE

SUNDAY 18 NOVEMBER  
NOTTINGHAM CASTLE MUSEUM & ART GALLERY  
Performed by Peter Davidson this event tells of the chilling story of the Nottingham lace industry.  
Two sessions 11am - 11.45am & 3pm - 3.45pm  
Adults £6, Concessions £4.50  
Price includes entry to Nottingham Castle Museum and Art Gallery  
**Bookings:** telephone +44(0)115 915 3700  
[www.mynottingham.gov.uk/nottinghamcastle](http://www.mynottingham.gov.uk/nottinghamcastle)

## 08 LACE BEHIND THE SCENES SUNDAY 18 NOVEMBER

NEWSTEAD ABBEY  
A special opportunity to view some of Nottingham City Museums and Galleries extensive lace collection, with the curator of costume and textiles.  
**Opening times**  
Two sessions: 10am - 12noon, or 1-30pm - 3-30pm  
**Bookings:** advance booking essential, see website for details.  
[www.mynottingham.gov.uk/newsteadabbey](http://www.mynottingham.gov.uk/newsteadabbey)

## 07 LACE ANGELS WORKSHOP SATURDAY 1 DECEMBER, 1PM - 3PM

NOTTINGHAM CASTLE MUSEUM & ART GALLERY  
Join this family activity and create a special keepsake for your Christmas tree. Children must be accompanied by an adult.  
Included in usual Castle admission price; no booking required  
[www.mynottingham.gov.uk/nottinghamcastle](http://www.mynottingham.gov.uk/nottinghamcastle)

## 11 EXHIBITION : ARCHIVE ARTIST: MADELEINE BURT 7 - 24 JANUARY 2013

THE LACE MARKET GALLERY, NEW COLLEGE NOTTINGHAM  
Madeleine Burt's work explores two archives local to the artist: the Lace Archive at Nottingham Trent University and the Moth Archive at Wollaton Hall. Admission free.  
[www.ncn.ac.uk/gallery](http://www.ncn.ac.uk/gallery)

## 10 LACE AND NATURE WEEKEND 9 & 10 FEBRUARY 2013

NOTTINGHAM CONTEMPORARY  
Tours and trails around the gallery, lace making demonstrations and hands-on workshops and activities linked to our own "cherry blossom" lace design (discovered when the gallery was being built in a buried time capsule). Admission free.  
**Bookings:** see website for full details  
[www.nottinghamcontemporary.org](http://www.nottinghamcontemporary.org)

## 10 LACE BALL THURSDAY 14 FEBRUARY

NOTTINGHAM CONTEMPORARY  
A celebration of the creativity of young Nottingham with music, dance and projections.  
**Bookings:** see website for full details  
[www.nottinghamcontemporary.org](http://www.nottinghamcontemporary.org)

## 09 LOVE, LACE & REVOLUTION: THE NOTTINGHAM FESTIVAL OF WORDS

16 & 17 FEBRUARY 2013  
NEWTON AND ARKWRIGHT BUILDINGS,  
NOTTINGHAM TRENT UNIVERSITY  
This inaugural Festival of Words takes its inspiration from Nottingham's lace industry, an important thread in the city's heritage.  
[www.nottwords.org.uk](http://www.nottwords.org.uk)