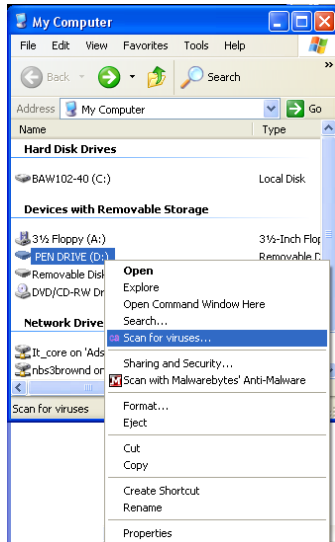
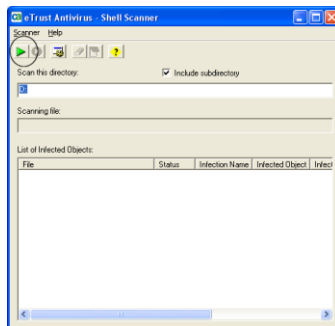


How to check your USB drive for viruses

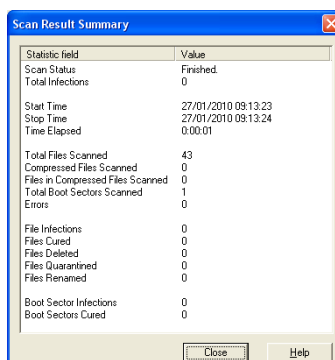
With the USB drive plugged in, open **My Computer**. Right-click on the USB icon, then left-click **Scan for viruses** from the drop-down menu.



When the Shell Scanner starts, ensure **include subdirectory** is ticked, and click the green start button (circled below).

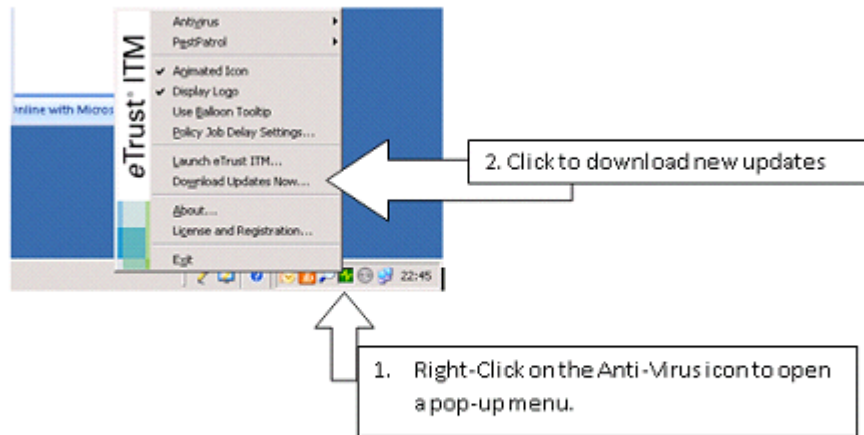


This will scan your USB drive for any viruses and produce a report like this, which you can then close. Any infected files should either have been deleted or cured.



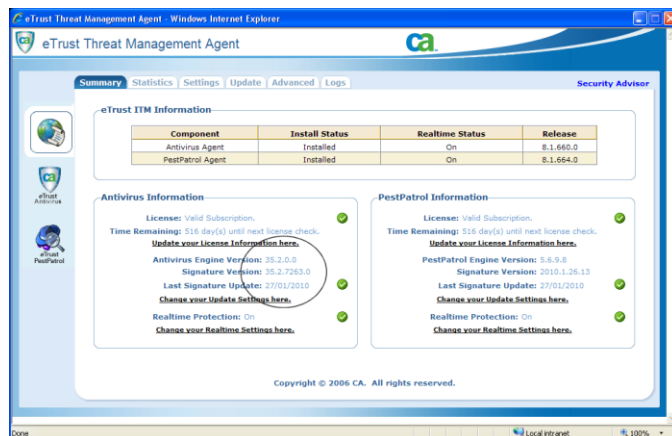
How to update your copy of eTrust on Campus

Right-click on the green eTrust icon in the System Tray (the section of the toolbar next the clock normally at the bottom of your screen). From the menu that appears, left-click **Download Updates Now**.



How to check the update has been successful

Right-click on the green eTrust icon in the System Tray and choose **About...** from the pop-up menu. You should see something similar to this:



Check **Last Signature Update** (circled above). eTrust is generally updated every day, so it should show a date no earlier than 24 hours behind. If the date is more than three days in the past there may be a problem with your eTrust installation. Try updating again. If you are still unsuccessful, contact the Service Desk.