

Bingo Cards

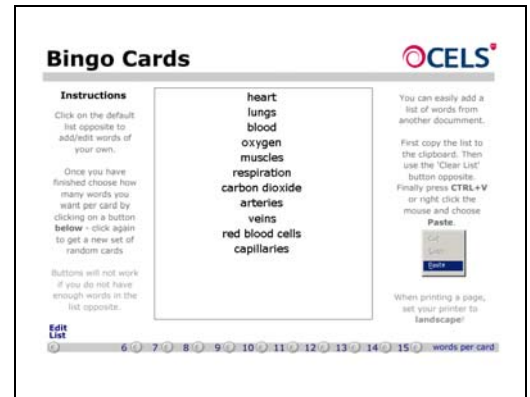
User's Guide

This online resource has been designed to help create quick and easy Plenary and Starter sessions. Using this resource, sets of random bingo cards can be generated from a list of keywords. Pupils could then be asked to cross off words from definitions or related words that you call out in a random order.

Either print off cards with a limited number of words from a large list - first to complete their card wins **OR** you could use *eight* or *ten* words per card. This will give cards with three rows one of which will be longer than the other two – first person to get their longest row filled in is the winner.

You will need a Flash-enabled Web browser (at least version 7 of Macromedia's Shockwave Flash) to be able to use this resource.

All you will then need is a list of keywords for your lesson or topic. These can be typed directly into the program or can be copied and paste from another document such as Word, a webpage or a textfile. To keep keywords like *Carbon Dioxide* together, type these on the same line.



Click on the **Edit List** button (bottom left) and this will highlight the word list. Click or move the cursor to the bottom of the list and you can add more words.

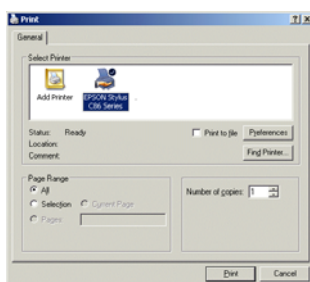
You can quickly remove the list pressing **Edit List** and then press the **Delete** Key.

You cannot save the list – this would involve using internet cookies and not all schools allow this function.

Once a list of keywords has been added, six random cards can be quickly created by pressing on the **numbered** buttons at the bottom of the screen.

Previews of cards will appear with between 6-15 words (according to the button you selected). If you try to make cards with more words than you have typed, you will get a polite message to suggest it is not possible!

Click on the same button to generate a new set of randomised cards – or another button for more/less.



On the right hand side of the button bar is a **Print** option. This will allow you to print off an A4 sized copy of the current preview.

When the Print window (dialogue box) opens change the Orientation Settings or Preferences to **Landscape** before sending the document to the printer. After printing you could generate another set of cards and send these to the printer in the same way – but always check the orientation!