

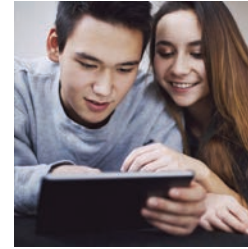
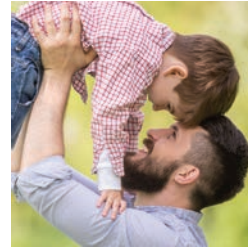
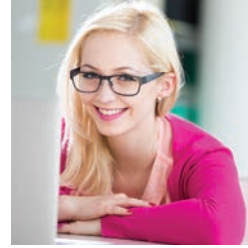
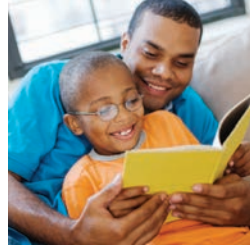
School of Social Sciences

# Nottingham Centre for Children, Young People and Families



**Nottingham Centre for  
Children, Young People and Families**

**NOTTINGHAM**  
TRENT UNIVERSITY



# Help us to make a positive difference to the lives of children, young people and families

At Nottingham Trent University, we believe that by working together, we can make a real difference to the lives of children, young people and families.

That's why we've set up the Nottingham Centre for Children, Young People and Families.

We'll be bringing together NTU academics and students with practitioners, policy makers, children, young people and families. Our aim is to combine this expertise to improve the everyday experiences and outcomes of children, young people and families living in Nottingham and beyond.

We'll do this by undertaking life-changing research, influencing policy developments and delivering cutting-edge courses for practitioners.

Our success and impact depends on our meaningful partnerships with a range of outside organisations.

This brochure introduces you to some of the work of our Centre. Please do get in touch with us to find out more about how to get involved with this exciting initiative.

## Who we are

The Centre is an interdisciplinary home to staff and students with interests and expertise in children, young people and families. Our network of academics is vast – nearly 100 specialists and growing.

Our distinctiveness is in our multidisciplinary approach, with members representing a wide range of subject areas including:

- Psychology
- Education
- Criminology and Youth Justice
- Sociology
- Social Work
- Health
- Law
- Childhood and Youth Studies

We will put co-production at the heart of the Centre's ambitions and activities, ensuring that children, young people and families play a central role in shaping our work.

All of our work is applied, shaped in close partnership with a number of external organisations, as some of the examples in this brochure illustrate. The Centre will act as a mechanism to further strengthen our links with practitioners, policy makers and the people with whom we want to make an impact.

# How we work

## Conducting research with life changing impact

The Centre seeks to inspire discovery, drive innovation and deliver research with real world impact. Our methodological expertise is vast, ranging from advanced statistical modelling through to doing focus groups with young people. We pride ourselves on our expertise in and commitment to ethical participatory action research, involving our partners as co-producers at all stages of the research process.

## Testing and evaluating new approaches

We will enable the testing of new approaches to working with children, young people and families and will provide current edge evaluation frameworks to translate, upscale and transfer innovation.

## Designing courses at the cutting edge

We believe that the most impactful work with children, young people and families has at its heart one significant element: a professional, highly trained workforce. We offer courses that put children, young people and families at the Centre of studies. From foundation and undergraduate level through to Professional Doctorates and PhDs, you'll find something to support you in your career development. We also want to work with you to develop your own continuing professional development (CPD) and workforce training needs.

## Shaping and influencing policy

We monitor and contribute to all major local, national and international policy debates on children, young people and families. Our mission is influence these debates, using our research and the voices of those affected by policy decisions.

## Children, young people and families will have **a powerful and influential voice**

We want to ensure that children, young people and families have the power to influence everything from the services that interact with them to the people elected to represent them. Our groundbreaking work on citizenship and social action combines strong international research through to practical work on the ground. We work with politicians, policy makers and community activists to identify new and exciting opportunities for strengthening democratic engagement.

### Case study: Young People and Politics (YPP) Study

The Young People and Politics (YPP) study led by NTU academics Matt Henn with Nick Foard, is a major project that has been awarded funding by the UK Economic and Social Research Council (ESRC). The research project examines young people's attitudes towards politics in Britain, and considers the widely held view that today's generation of youth is increasingly reluctant to play a role in political life and is dismissive of the formal political process and democratic institutions.

The YPP study examines the views and political orientations of today's generation of 18-year-olds. It has looked at young people's levels of interest in politics, attitudes towards democracy and what political parties need to do if they are to engage young people in the future.

The YPP project has recently been subject to a major evaluation by the ESRC, which concluded that: "(The) research is of strong international quality and strong impact within its field, with publications in leading journals or other academic outlets; and high quality research with evidence of substantial impact on policy and practice."

## Children, young people and families will be **better protected from exploitation and harm**

The Centre supports work that seeks to reduce harm and challenge the different forms of exploitation faced by vulnerable children, young people and families. Working across health, social care and criminal justice organisations, we support pioneering partnerships, improve workforce training and undertake major collaborative research projects.

### Case study: The Safer Living Foundation

Nationally recognised for outstanding work, and awarded the 2015 Robin Corbett Award for Prisoner Rehabilitation, the Safer Living Foundation deploys expertise in close alignment with local and regional civic partners in the support of high risk sexual offenders and protection of communities.

An initiative between HMP Whatton, National Probation Service (East Midlands), Nottinghamshire Police, Circles UK and Nottingham Trent University. The Foundation focuses on reducing sexual (re)offending through rehabilitative initiatives that promote the protection of people from, and the

prevention of, sexual crime, and support the rehabilitation of those who have committed or who are likely to commit sexual offences against others. Working with older and intellectually disabled offenders – who often have little or no social support – trained volunteers meet on a regular basis with offenders to assist their reintegration into society, by acting as a support network and safety mechanism for offenders and for protection of the community at large. Uniquely, the offender support commences prior to release from custody, and continues through the release and into the community.

# Children, young people and families will **experience positive mental health and wellbeing**

The Centre supports work that makes a positive impact on mental health and wellbeing. We investigate, evaluate and improve interventions targeted at those who need help, and contribute to wider efforts to tackle the environmental, structural and cultural factors that influence our collective wellbeing.

## Case study: Talk About Self-Harm (TASH) in Primary Care

The TASH project involved young people with experience of self-harm in improving the competence and confidence of primary health care staff in promoting the use of self-help strategies.

The TASH project was founded on the premise that early detection and improved services to children and young people with mental health needs and self-harm presenting to primary care, would afford significant benefits in health and wellbeing outcomes by preventing young people's self-harm escalating to the point where specialist, costly and longer term mental health interventions from the NHS became necessary.

The study used participatory action research (PAR) to actively engage young people and three primary health care teams in deciding what works in relation to self-help strategies. The findings resulted in the creation of a blog and a range of self-help materials for young people.



# Children, young people and families will **live in a just world**

For over 20 years, NTU has been home to nationally and internationally recognised and award winning criminology teaching and research. One strand of our work focuses on improving the experiences and outcomes for young people involved in the criminal justice system to ensure a more just world – for victims and for offenders. We work with prisons, the police, probation services, our local Police and Crime Commissioner and a range of voluntary and private sector organisations to improve our understanding of crime and the responses to it.

## Case study: Understanding Repeat Anti-social Behaviour Victimisation

Working with the Nottingham Crime and Drugs Partnership, NTU criminologist Roger Hopkins-Burke led a team of staff and students to develop a better understanding of the general nature of anti-social behaviour and the more serious end of the victim spectrum by exploring the experiences of repeat victims.

Using a random sample of incident calls and in-depth interviews with repeat victims, the work enabled a better understanding of victim experiences, current responses and potential further solutions.

As well as contributing new insights to the field, the work enabled the Crime and Drugs Partnership and the Police to review their policies and procedures.

# Children, young people and families will have **the best start to life**

We're proud to be in the centre of Nottingham – the UK's first 'early intervention city' and one of the Early Intervention Foundation's pioneering places. We want to help take positive action before issues or problems become entrenched. We believe that the case for investing in early intervention is strong – both in moral and economic terms.

## Case study: Improving Early Help Services

Following the successful award of a Knowledge Transfer Partnership (KTP), Dr Adam Barnard and his team from NTU have worked with Nottinghamshire County Council to improve the effectiveness of the Early Help Service for children and young people.

Over 30 months, the project has been reviewing the approaches taken to assessing needs and working with children. The project also reviewed the parenting programmes on offer, and the evidence base for these. The project employed a range of research methods, including involving children, young people and those associated in their care.

Overall the project aims to use the expertise of partners, rigorous and methodical research, and the experiences and views of children and young people to develop an innovative model of service delivery for the Council. This innovative model will improve outcomes and better meet the needs of children and young people in Nottinghamshire.

## Getting involved with the Centre

Join nearly 100 academics with specialist expertise in children, young people and families by working with the Centre.

### **Working together, we can:**

- Understand what works, for whom, how and in what situation
- Test and evaluate new ways of working
- Undertake meaningful consultation with user groups
- Tailor specific Continuing Professional Development (CPD)
- Apply for funding to undertake collaborative research
- Provide 'Visiting Fellowships' for your staff to work alongside the Centre

# How to get in touch with us



Dr Jason Pandya-Wood  
Acting Director  
[jason.wood@ntu.ac.uk](mailto:jason.wood@ntu.ac.uk)



Rachel Harding  
Research Fellow  
[rachel.harding@ntu.ac.uk](mailto:rachel.harding@ntu.ac.uk)

## Nottingham Centre for Children, Young People and Families

Nottingham Trent University  
Chaucer building  
Nottingham  
NG1 4BU

Tel: **+44 (0)115 848 4836**  
Email: [nccyvf@ntu.ac.uk](mailto:nccyvf@ntu.ac.uk)

[www.ntu.ac.uk/nccyvf](http://www.ntu.ac.uk/nccyvf)

This information can be made available in alternative formats.

© Nottingham Trent University and may not be reproduced or transmitted in any form in whole or in part without the prior written consent of Nottingham Trent University.

Please note that whilst the University has taken all reasonable steps to ensure the accuracy of the content within this leaflet at the time of printing, the University reserves the right to remove, vary or amend the content of the leaflet at any time. For avoidance of doubt, the information provided within the content of this leaflet is for guidance purposes.